



US008010487B2

(12) **United States Patent**
Richardson et al.

(10) **Patent No.:** **US 8,010,487 B2**
(45) **Date of Patent:** **Aug. 30, 2011**

(54) **SYNCHRONIZATION AND COLLABORATION WITHIN PEER-TO-PEER AND CLIENT/SERVER ENVIRONMENTS**

(75) Inventors: **Ransom Lloyd Richardson**, Beverly, MA (US); **Edward J Fischer**, Cambridge, MA (US); **Dana Zircher**, Woburn, MA (US); **Christopher Norman**, Princeton, MA (US); **Hugh Francis Pyle**, Salem, MA (US); **Michael Andrew Jeffers**, Boston, MA (US); **Robert Sean Slapikoff**, Chelmsford, MA (US)

7,032,033	B1 *	4/2006	Ledoux et al.	709/248
7,146,399	B2 *	12/2006	Fox et al.	709/203
7,152,076	B2 *	12/2006	Sundararajan et al.	1/1
7,225,231	B2 *	5/2007	Mendez et al.	709/206
7,251,669	B1	7/2007	Arora	
7,564,874	B2 *	7/2009	King	370/503
7,720,884	B1 *	5/2010	Gandhi et al.	707/804
7,725,669	B1 *	5/2010	Bingham et al.	711/162
7,734,828	B2 *	6/2010	Prasad	709/248
2002/0169745	A1 *	11/2002	Hotti et al.	707/1
2003/0130984	A1 *	7/2003	Quinlan et al.	707/1
2004/0117666	A1	6/2004	Lavender	
2004/0128354	A1 *	7/2004	Horikiri et al.	709/204
2004/0193952	A1 *	9/2004	Narayanan et al.	714/13

(Continued)

(73) Assignee: **Microsoft Corporation**, Redmond, WA (US)

(*) Notice: Subject to any disclaimer, the term of this patent is extended or adjusted under 35 U.S.C. 154(b) by 495 days.

(21) Appl. No.: **12/147,862**

(22) Filed: **Jun. 27, 2008**

(65) **Prior Publication Data**
US 2009/0327302 A1 Dec. 31, 2009

(51) **Int. Cl.**
G06F 17/30 (2006.01)

(52) **U.S. Cl.** **707/622; 707/623; 709/227; 709/248**

(58) **Field of Classification Search** **709/227, 709/248; 707/999.203, 622, 623, 999.201**
See application file for complete search history.

(56) **References Cited**

U.S. PATENT DOCUMENTS

6,397,125	B1 *	5/2002	Goldring et al.	700/200
6,564,246	B1 *	5/2003	Varma et al.	709/205
6,598,059	B1	7/2003	Vasudevan	
6,662,212	B1 *	12/2003	Chandhok et al.	709/206
6,678,882	B1 *	1/2004	Hurley et al.	717/121
6,809,738	B2 *	10/2004	Hubrecht et al.	345/543
6,868,425	B1	3/2005	Bergstraesser	

OTHER PUBLICATIONS

Chou, "Get into the Groove: solutions for secure and dynamic collaboration", TechNet Magazine Jan. 2007, pp. 58-63.*

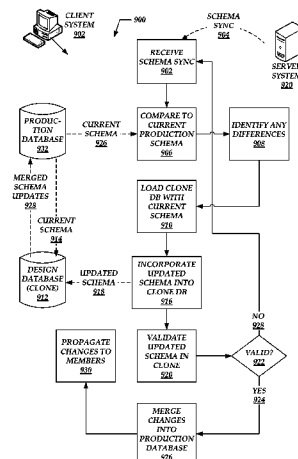
(Continued)

Primary Examiner — Hung T Vy
Assistant Examiner — Phuong-Thao Cao
(74) *Attorney, Agent, or Firm* — Hope Baldauff Hartman, LLC

(57) **ABSTRACT**

Tools and techniques are described for synchronization and collaboration within peer-to-peer and client/server environments. These tools may provide methods that include establishing peer-to-peer relationships between two or more client systems. These relationships enable the client systems to create respective local instances of workspaces, shared between the client systems to allow them to collaborate with one another. The client systems may participate in peer-to-peer synchronization flows with one another, with the synchronization flows representing updates made local to the shared workspaces of the client systems. The methods may also establish establishing a client/server relationship between one of the client systems and a server system. Through this client/server relationship, the client and server systems may participate in client/server synchronization flows, with these flows representing updates made to the local shared workspace at the client system.

20 Claims, 9 Drawing Sheets



U.S. PATENT DOCUMENTS

2005/0044530	A1	2/2005	Novik	
2005/0091233	A1*	4/2005	Friske et al.	707/100
2005/0193024	A1*	9/2005	Beyer et al.	707/200
2005/0198074	A1*	9/2005	Khayter et al.	707/104.1
2005/0251523	A1*	11/2005	Rajamani et al.	707/100
2006/0085380	A1*	4/2006	Cote et al.	707/1
2006/0101064	A1*	5/2006	Strong et al.	707/102
2006/0155716	A1*	7/2006	Vasishth et al.	707/100
2006/0277224	A1*	12/2006	Aftab et al.	707/201
2007/0019683	A1*	1/2007	Kryzyanowski	370/503
2007/0088707	A1*	4/2007	Durgin et al.	707/10
2007/0136325	A1*	6/2007	Chan et al.	707/100
2007/0186157	A1*	8/2007	Walker et al.	715/530
2007/0198744	A1*	8/2007	Wensley et al.	709/248
2007/0219826	A1*	9/2007	Brodsky et al.	705/2
2007/0255787	A1*	11/2007	Richardson et al.	709/204
2007/0276836	A1*	11/2007	Chatterjee et al.	707/10
2008/0028000	A1	1/2008	Makismenka	
2008/0034012	A1	2/2008	Novik	

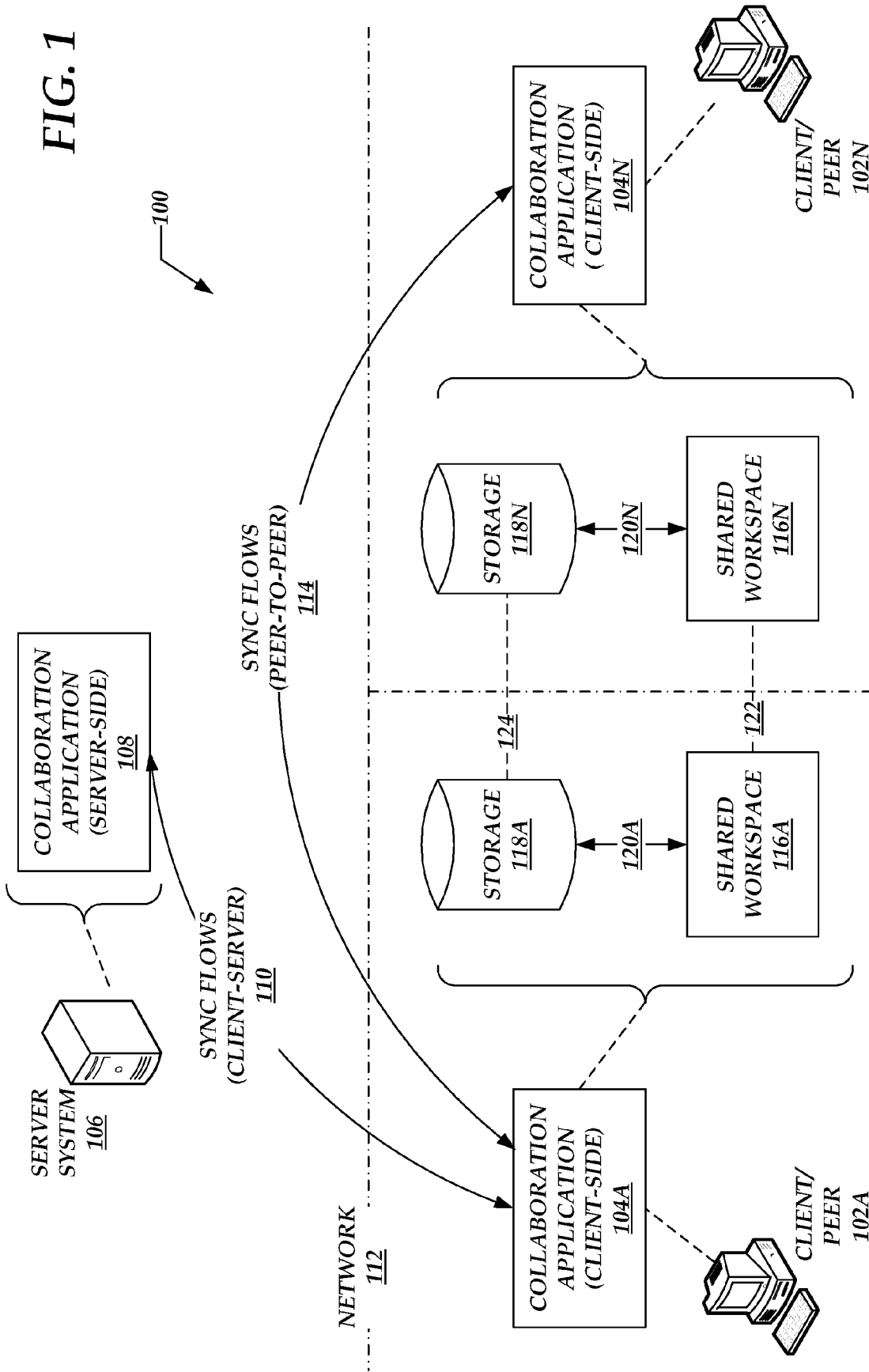
2008/0077632	A1*	3/2008	Tysowski et al.	707/204
2008/0098042	A1*	4/2008	Tian et al.	707/201
2008/0165807	A1*	7/2008	Nilo et al.	370/503
2009/0240726	A1*	9/2009	Carter et al.	707/103 R

OTHER PUBLICATIONS

Microsoft Office Groove 2007 Product Guide, Sep. 2006, pp. 1-31.*
Castro et al., IEEE Computer Society, Proceedings of the Sixth IEEE Workshop on Mobile Computing Systems and Applications entitled, "A Programming Framework for Mobilizing Enterprise Applications," dated 2004; 10 pgs.
Website article entitled, "Introduction to the Microsoft Sync Framework Runtime," dated Nov. 2007; 12 pgs.
Website article entitled, "Microsoft Launches Sync Framework," downloaded Jun. 2008; 6 pgs.
Website article entitled, "Get into the Groove: Solutions for Secure and Dynamic Collaboration," downloaded Jun., 2008; 6 pgs.

* cited by examiner

FIG. 1



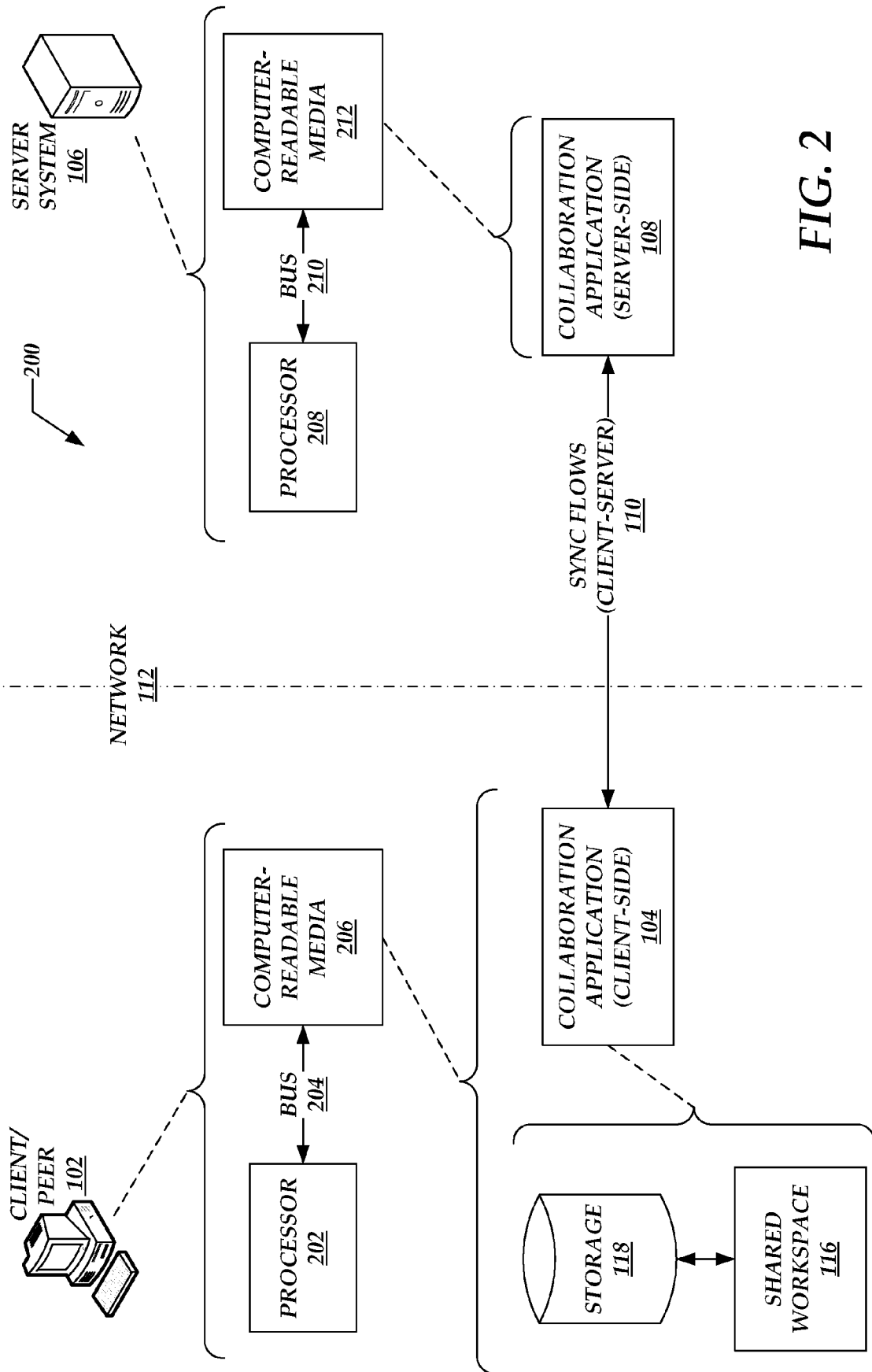


FIG. 2

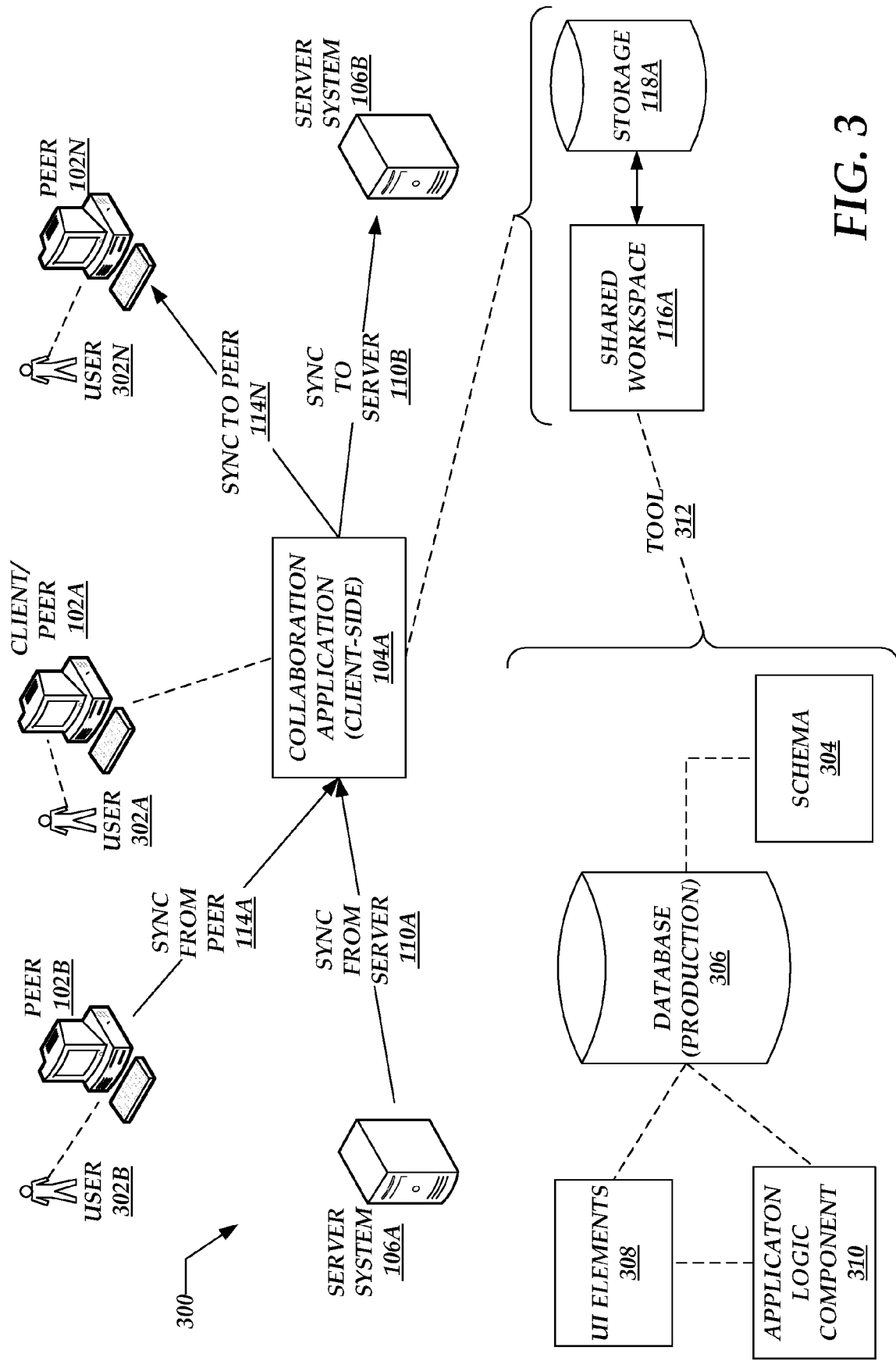


FIG. 3

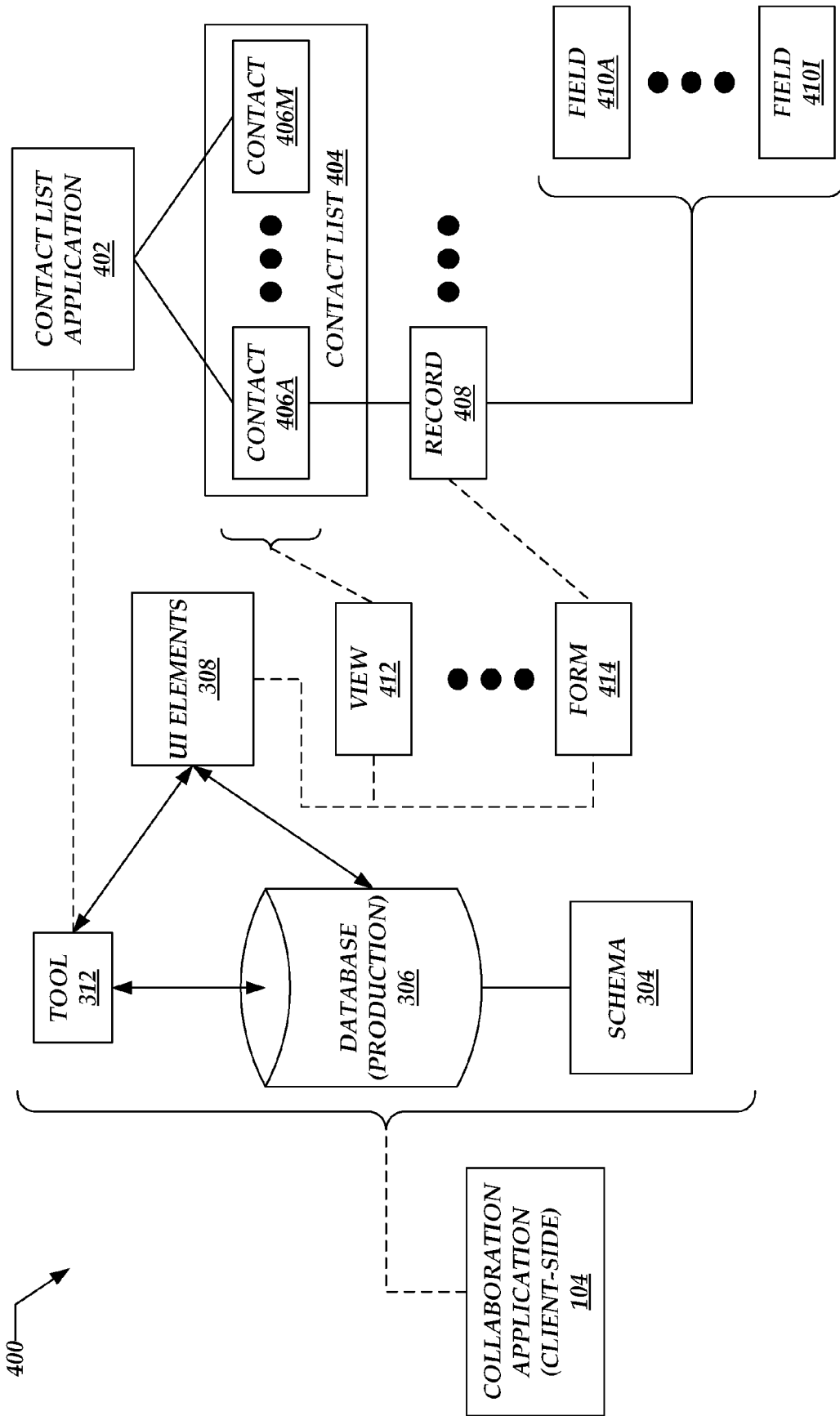


FIG. 4

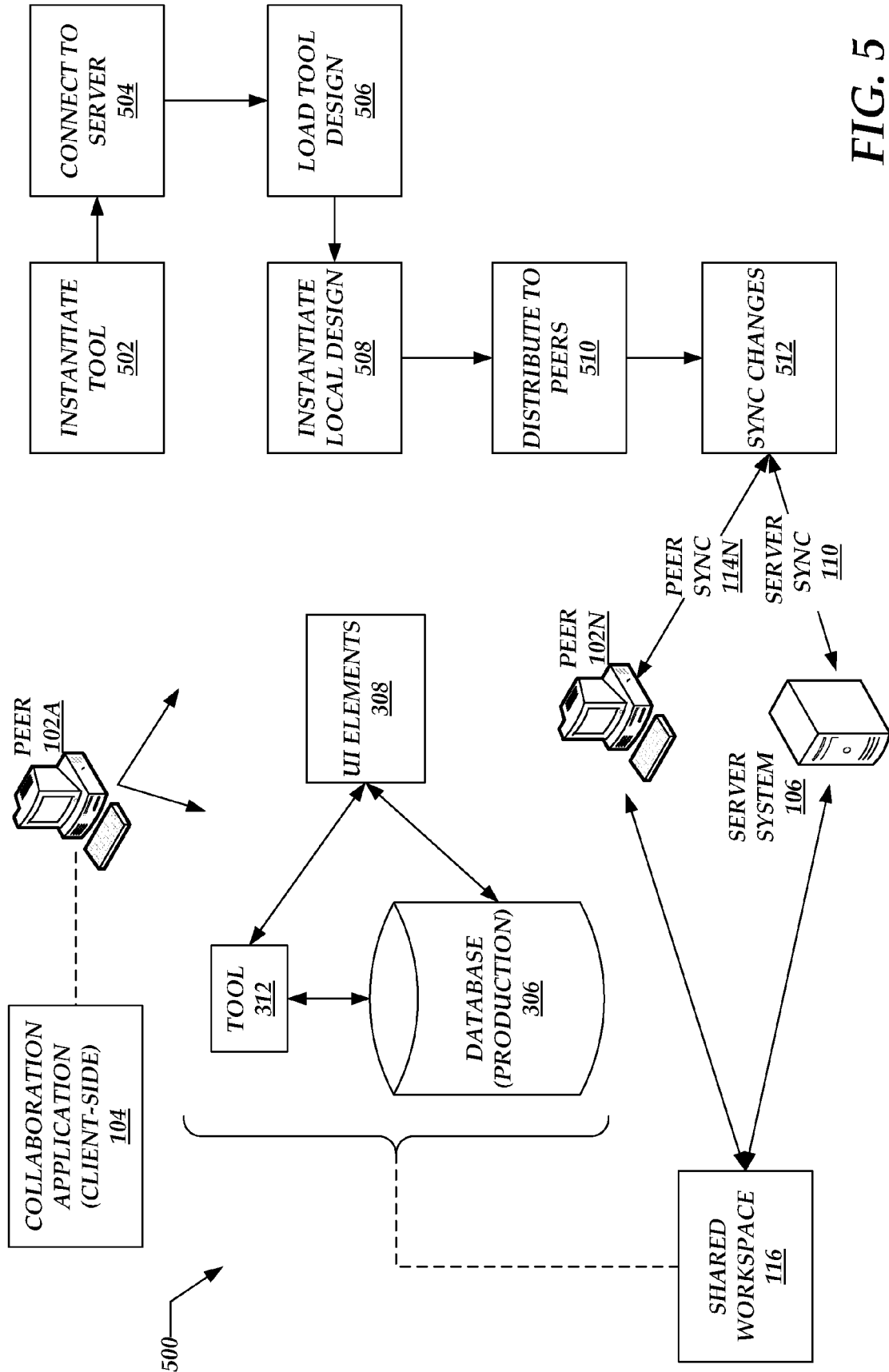


FIG. 5

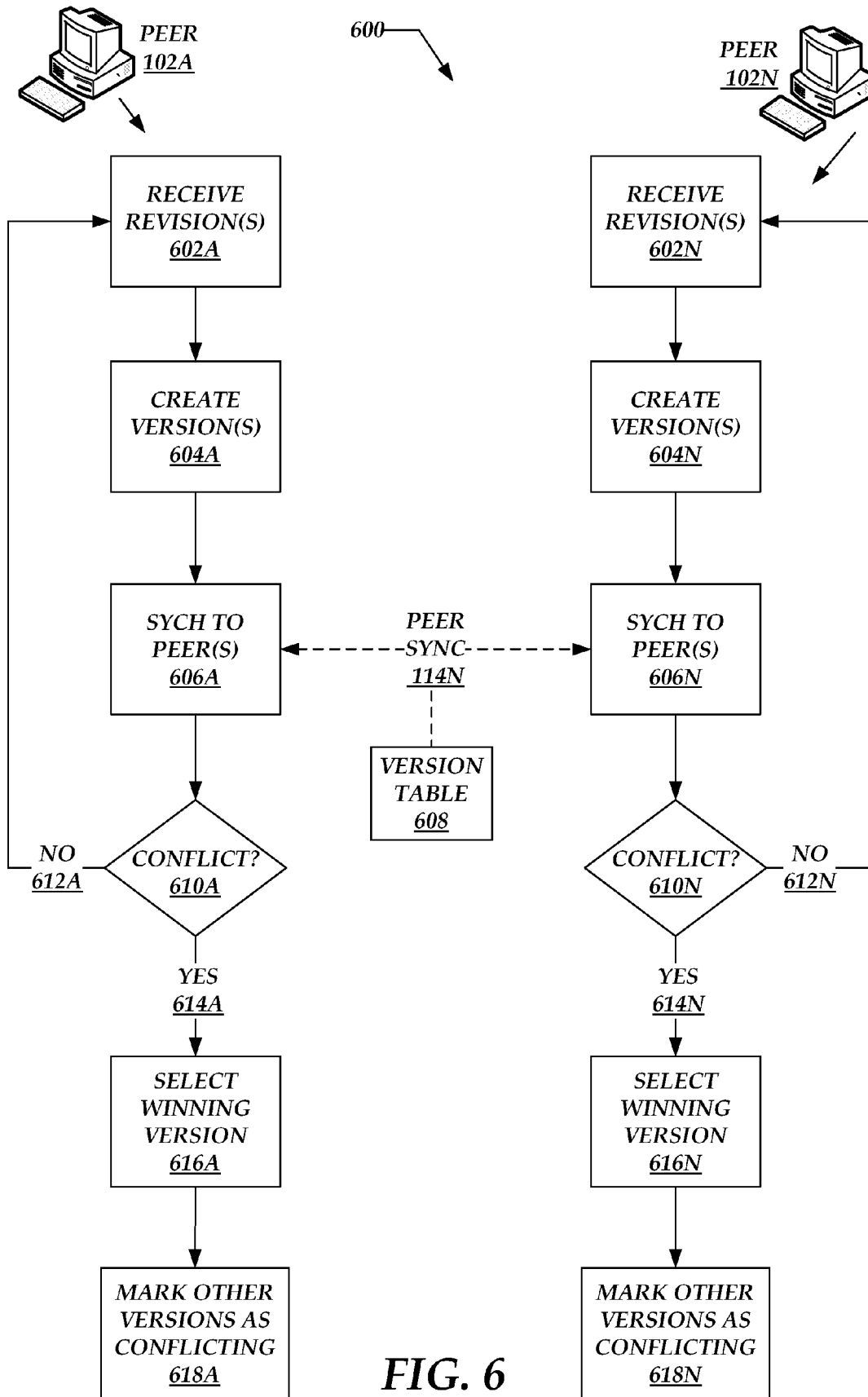


FIG. 6

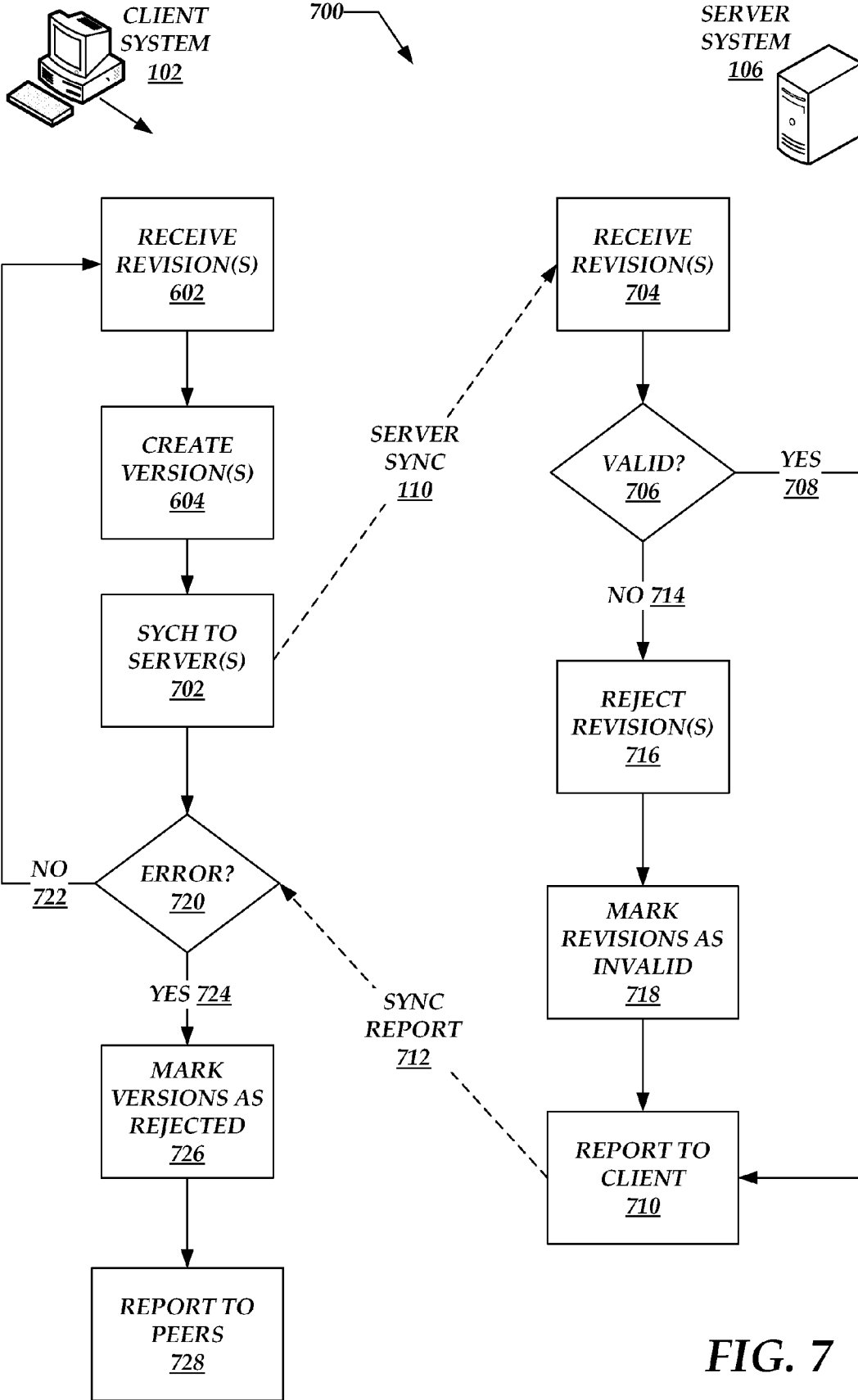


FIG. 7

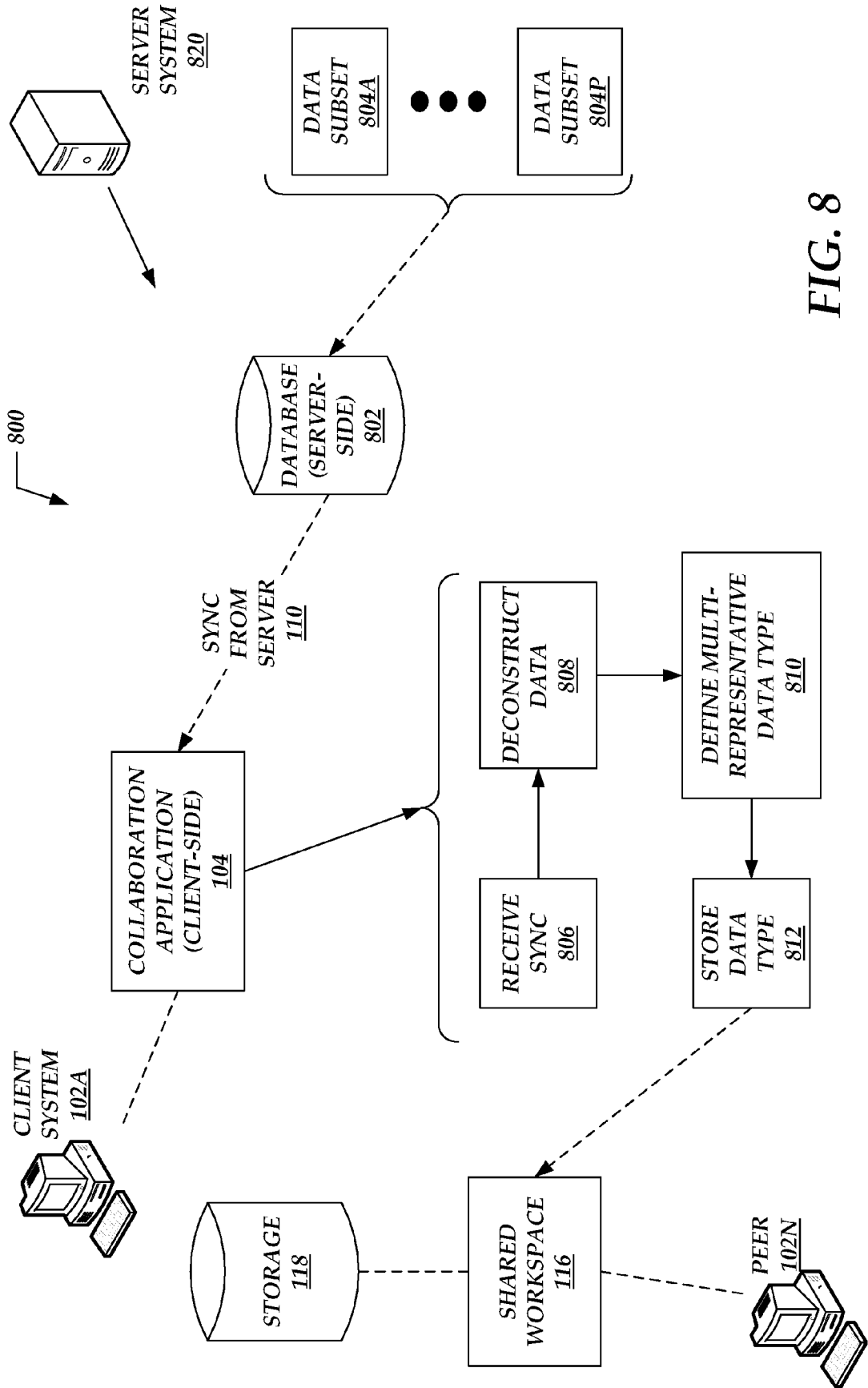


FIG. 8

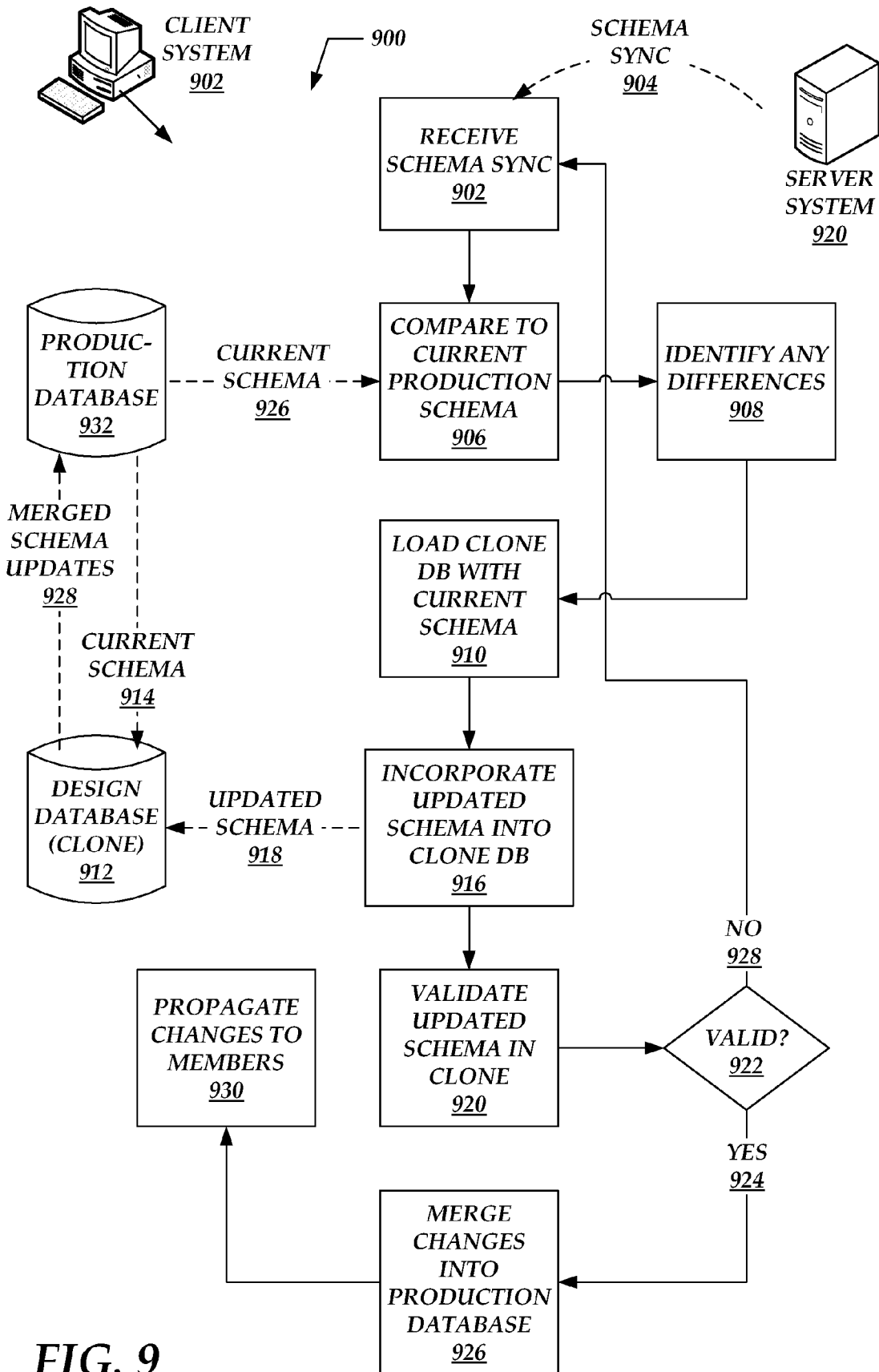


FIG. 9

1

SYNCHRONIZATION AND COLLABORATION WITHIN PEER-TO-PEER AND CLIENT/SERVER ENVIRONMENTS

BACKGROUND

Collaboration tools may operate on a peer-to-peer model, in which two or more client or peer systems establish peer-to-peer relationships, by which their respective users may collaborate or cooperate on some particular project of interest. As changes or revisions occur on the different peer systems, the collaboration tools may sync or propagate these changes to the other peer systems. Groups of these peer systems may be configured so that no single peer serves as a single central coordination point. Such groups of peer systems may be characterized as “distributed” systems or “multi-master” systems.

Collaboration tools may operate on a client-server model, in which certain functions are allocated to the server and other functions are permitted to the client. In cases where the client goes off-line, the client may be able to perform some limited functionality. When the client returns online, the client and server may sync any changes with one another. In some cases, multiple different clients may communicate with the server in a hub-spoke topology.

SUMMARY

Tools and techniques are described for synchronization and collaboration within peer-to-peer and client/server environments. These tools may provide methods that include establishing peer-to-peer relationships between two or more client systems. These relationships enable the client systems to create respective local instances of data, shared between the client systems to allow them to collaborate with one another. The client systems may participate in peer-to-peer synchronization flows with one another, with the synchronization flows representing updates made locally to the data shared between the client systems. The methods may also establish establishing a client/server relationship between one or more of the client systems and a server system. Through this client/server relationship, the client and server systems may participate in client/server synchronization flows, with these flows representing updates made to the local shared data at the client system, or updates made at the server system.

The above-described subject matter may also be implemented as a method, computer-controlled apparatus, a computer process, a computing system, or as an article of manufacture such as a computer-readable medium. These and various other features will be apparent from a reading of the following Detailed Description and a review of the associated drawings.

This Summary is provided to introduce a selection of concepts in a simplified form that are further described below in the Detailed Description. This Summary is not intended to identify features or essential features of the claimed subject matter, nor is it intended that this Summary be used to limit the scope of the claimed subject matter. Furthermore, the claimed subject matter is not limited to implementations that solve any or all disadvantages noted in any part of this disclosure.

BRIEF DESCRIPTION OF THE DRAWINGS

FIG. 1 is a combined block and flow diagram illustrating systems or operating environments for synchronization and collaboration within peer-to-peer and client/server environments.

2

FIG. 2 is a combined block and flow diagram illustrating additional aspects of the client systems and server systems as shown in FIG. 1.

FIG. 3 is a combined block and flow diagram illustrating components and data flows by which a given client system may exchange peer-to-peer synchronization flows with any number of other client systems, as well as participating in client/server synchronization flows involving any number of server systems.

FIG. 4 is a block diagram illustrating additional aspects of a production database and related schema, UI elements, and tools as provided by a client-side collaboration application, as shown in FIG. 3.

FIG. 5 illustrates process flows, denoted generally at 500, related to instantiating in syncing tools and applications, such as those discussed in connection with FIGS. 3 and 4.

FIG. 6 is a combined block diagram and flow chart, illustrating components and process flows by which peer systems may revise and synchronize revisions occurring locally on the various peer systems.

FIG. 7 is a flow chart illustrating processes for performing syncs between clients and servers.

FIG. 8 is a combined block diagram and flow chart, illustrating processes for syncing data from server systems two client systems, operable with data storage architectures.

FIG. 9 is a flow chart illustrating processes for updating application designs on the client systems, in response to design changes synced in from server systems.

DETAILED DESCRIPTION

The following detailed description is directed to technologies for enhanced synchronization and collaboration within peer-to-peer and client/server environments. While the subject matter described herein is presented in the general context of program modules that execute in conjunction with the execution of an operating system and application programs on a computer system, those skilled in the art will recognize that other implementations may be performed in combination with other types of program modules. Generally, program modules include routines, programs, components, data structures, and other types of structures that perform particular tasks or implement particular abstract data types. Moreover, those skilled in the art will appreciate that the subject matter described herein may be practiced with other computer system configurations, including hand-held devices, multiprocessor systems, microprocessor-based or programmable consumer electronics, minicomputers, mainframe computers, and the like.

In the following detailed description, references are made to the accompanying drawings that form a part hereof, and which are shown by way of illustration specific embodiments or examples. Referring now to the drawings, in which like numerals represent like elements through the several figures, aspects of tools and techniques for synchronization and collaboration within peer-to-peer and client/server environments will be described.

FIG. 1 illustrates systems or operating environments, denoted generally at 100, for synchronization and collaboration within peer-to-peer and client/server environments. These systems 100 may include one or more client or peer systems 102, with FIG. 1 illustrating two examples of such systems, denoted at 102a and 102n (collectively, client systems 102). As detailed further below, this description may refer to these systems 102 as client systems, peer systems, or member systems, depending on the context of the description, and depending on the other systems with which these systems

102 are interacting at a given time. Implementations of the description herein may include any number of client systems 102, with FIG. 1 showing two examples only to facilitate this description.

Turning to the client systems 102 in more detail, the client systems 102 may contain respective instances of a collaboration application, as denoted at 104a and 104n (collectively, collaboration application 104). In some instances, these collaboration applications may enable one or more given client systems 102 to interact with one or more external server systems 106. In such instances, the server systems 106 and the given client systems 102 may have a client/server relationship, and the collaboration applications 104 may serve as client-side collaboration applications. Accordingly, the server system 106 may include a server-side collaboration application 108, which is adapted to cooperate with the client-side collaboration applications 104 to exchange synchronization flows 110 between the client and server systems.

Subsequent drawings and related description elaborate further on these client/server synchronization flows 110. However, in overview, the collaboration applications 104 and 108 may enable one or more users (not shown) accessing the client systems 102 to synchronize various data to and/or from the server systems 106. More specifically, the client systems 102 and the server systems 106 may communicate over one or more intermediate communications networks 112. These networks 112 generally represent any protocols, adapters, components, and other general infrastructure associated with wired and/or wireless communications networks. Such networks 112 may be global, regional, local, and/or personal in scope and nature, as appropriate in different implementations.

In some cases, two or more of the systems (e.g., 102a and 102n) may simultaneously be in a peer-to-peer relationship with one another, while also being in a client/server relationship with the server systems 106. In such instances, these systems 102 may be characterized as peer systems, vis-à-vis one another. As such, the client-side collaboration components may enable the peer systems 102 to exchange peer-to-peer synchronization flows 114 with one another.

Subsequent drawings and related description elaborate further on these peer-to-peer synchronization flows 114. In overview, the client-side collaboration applications 104 may enable the users accessing the client systems 102 to collaborate with other users accessing similarly-configured client systems 102. In some cases, the client systems 102 may communicate with one another over the network 112, or other similar networks.

Turning to the client/peer systems 102 in more detail, the collaboration applications 104 may implement and maintain a shared workspace, through which the client systems 102 collaborate with one another. For example, respective users associated with the client systems 102a and 102n may collaborate with one another while working on a given project in a corporate enterprise. To facilitate this cooperation between the users, the collaboration applications 104 may maintain local instances of the shared workspace, as denoted respectively at 116a and 116n (collectively, shared workspace 116). In addition, the collaboration applications 104 may maintain respective instances of storage elements, as denoted respectively at 118a and 118n (collectively, storage elements 118).

In general, the storage elements 118 may contain any databases, data structures, schemas, or other data elements as appropriate for implementing the shared workspace 116 through which the client systems collaborate. Data and/or process flows between local instances of the shared work-

spaces 116 and the local storage elements 118 are represented at 120a and 120n, respectively on the client systems 102a and 102n.

Although the client systems 102 maintain respective local instances of the shared workspaces 116 and storage elements 118, the peer-to-peer flows 114 enable these local instances of the shared workspaces 116 and storage elements 118 to be synchronized with one another. More specifically, actions performed locally at the client system 102a may be synchronized over to the client system 102n, and vice versa.

Over time, the peer-to-peer synchronization flows 114 cause the shared workspaces 116a and 116n to mirror one another, as represented by dashed line 122 in FIG. 1. Similarly, the peer-to-peer synchronization flows 114 also cause the storage elements 118a and 118n to mirror one another, as represented by a dashed line 124 and FIG. 1.

Having described the operating environments 100 in FIG. 1 for synchronization and collaboration within peer-to-peer and client/server environments, the discussion now turns to a more detailed description of architectural components within the client/peer systems 102 and the server systems 106. This description is now provided with FIG. 2.

FIG. 2 illustrates additional aspects, denoted generally at 200, of the client systems and server systems as shown in FIG. 1. For convenience of description, but not to limit possible implementations, FIG. 2 may carry forward some elements from previous drawings, and denote them with identical reference numbers. For example, FIG. 2 carries forward an example client system 102 that may communicate with an example server system 106 over a network 112.

Turning to the client systems 102 in more detail, these may include one or more processors 202, which may have a particular type or architecture, chosen as appropriate for particular implementations. The processors 202 may couple to one or more bus systems 204 chosen for compatibility with the processors 202.

The client systems 102 may also include one or more instances of computer-readable storage media 206, which couple to the bus systems 204. The bus systems may enable the processors 202 to read code and/or data to and/or from the computer-readable storage media 206. The media 206 may represent storage elements implemented using any suitable technology, including but not limited to semiconductors, magnetic materials, optics, or the like. The media 206 may include memory components, whether classified as RAM, ROM, flash, or other types, and may also represent hard disk drives.

The storage media 206 may include one or more data structures and modules of instructions that, when loaded into the processor 202 and executed, cause the client systems 102 to perform various tools and techniques relating to synchronization and collaboration within peer-to-peer in client/server environments. Examples of these modules may include a client-side collaboration application, carried forward at 104. The collaboration application may enable two or more of the client systems 102 to establish and maintain the shared workspace 116. As detailed further throughout this description, the shared workspace 116 may enable different users to collaboratively access and edit a variety of different shared folders, documents, objects, and the like. For example, the storage elements, carried forward at 118, may store or contain representations of such folders, documents, objects, and the like.

Turning now to the server systems 106 in more detail, these server systems may include one or more processors 208, which may have a particular type or architecture, chosen as appropriate for particular implementations. The processors 208 in the server systems 106 may or may not have the same

type and/or architecture as the processors **202** in the client systems **102**. The processors **208** may couple to one or more bus systems **210** chosen for compatibility with the processors **208**.

The server systems **106** may also include one or more instances of computer-readable storage media **212**, which couple to the bus systems **210**. The bus systems may enable the processors **208** to read code and/or data to and/or from the computer-readable storage media **212**. The media **212** may represent storage elements implemented using any suitable technology, including but not limited to semiconductors, magnetic materials, optics, or the like. The media **212** may include memory components, whether classified as RAM, ROM, flash, or other types, and may also represent hard disk drives.

The storage media **212** may include one or more data structures and modules of instructions that, when loaded into the processor **208** and executed, cause the server systems **106** to perform various tools and techniques relating to synchronization and collaboration within peer-to-peer in client/server environments. For example, these modules may provide one or more instances of server-side collaboration applications, carried forward at **108**. As detailed further below, the client-side and server-side collaboration applications (**104** and **106**, respectively) may cooperate to exchange the client server synchronization flows **110** between the client systems **102** and the server systems **106**.

In some cases, the server system **106** may assume the role of a client or peer system, along with one or more of the client systems **102**. In other cases, the server system may perform specialized functions not otherwise performed by the client systems **102**. For example, the server system **106** may provide backup, administrative, managerial, or other services on behalf of the client systems **102**, in connection with facilitating collaboration between the client systems **102**, as well as between the client systems **102** and the server systems **106**.

As can be appreciated from FIGS. **1** and **2**, the systems or operating environments shown therein may facilitate both client/server interactions and peer-to-peer interactions. The discussion now proceeds to FIG. **3** to provide additional description of these client/server and peer-to-peer interactions, as facilitated by the collaboration applications.

FIG. **3** illustrates components and data flows, denoted generally at **300**, by which a given client system may exchange peer-to-peer synchronization flows with any number of other client systems, as well as participating in client/server synchronization flows involving any number of server systems. For convenience of description, but not to limit possible implementations, FIG. **3** may carry forward some elements from previous drawings, and denote them with identical reference numbers. For example, FIG. **3** carries forward an example client-side collaboration application at **104**, as contained within an example client or peer system **102a**.

Turning to the client or peer system **102a**, the collaboration application **104a** running thereon may manage and maintain local instances of the shared workspace **116a** and related storage elements **118a**. more specifically, a user **302a** associated with the client system **102a** may wish to collaborate on a given project with other users **302b** and **302n**, who are associated respectively with the peer systems **102b** and **102n**. Accordingly, the user **302a** may issue commands to the collaboration application **104a** to issue invitations to the peer systems **102b** and **102n**, thereby inviting the users **302b** and **302n** to collaborate with the user **302a**. assuming that the user **302b** and/or the user **302n** accepts these invitations, the peer system **102a** may instantiate the shared workspace **116a** and storage elements **118a**, while the peer systems **102b** and **102n**

instantiate corresponding shared workspaces and storage elements (not shown in FIG. **3**, but illustrated in FIG. **1**).

Having established peer-to-peer synchronization relationships among the peer systems **102a-102n**, the client-side collaboration components **104** operating respectively on these peer systems may synchronize changes made on any of these peer systems. For example, if the user **302b** makes a change or revision locally at the peer system **102b**, this change may be synced to the peer system **102a**, as represented at **114a**. In turn, the peer system **102a** may forward this change or revision to the peer system **102n**, as represented at **114n**. In general, peer-to-peer synchronization flows may occur at any suitable direction between the peer systems **102a-102n**.

Assume, for example, that the users **302a-302n** (collectively, users **302**) are collaborating on a project that involves maintenance of an address book, contact list, or other similar data structure (referred to collectively as the “contact list”), to be distributed among the client systems **102a-102n**. In this example, one of the peer systems (e.g., the peer system **102a**) may download a set of data structures or other elements from an external server system (e.g., **106a**), as represented generally at **110a**. For example, the server system **106a** may sync to the client system **102a** a schema **304** for building a production database **306** suitable for housing the address book, contact list, or data structure collaboratively maintained and revised by the peer systems **102a-102n**. In addition, the production database **306** may populate a set of user interface (UI) elements **308**, with which the users **302** may interact when issuing commands related to accessing or revising the contact list.

The client-side collaboration application **104a** may instantiate one or more application logic components **310** that are operative to access or revise a contact list, in response to user input. The application logic components **310** may be incorporated into tools **312**, along with data within the database **306**, the schema **304**, and related UI elements **308**. The application logic components **310** may include logic for transforming and validating data, as described in further detail below. In some instances, the application logic components **310** may include descriptions of business logic (e.g., advanced validation, workflow behavior based on actions taken at clients, and the like) that may be transported from the server to groups of peer systems.

Taken collectively, the production database **304**, the related schema **304**, the UI elements **308**, and the application logic components **310** may operate through the workspaces **116** shared across the client systems **102**. Having introduced these items in FIG. **3**, the discussion now turns to a more detailed description of these items, now presented with FIG. **4**.

FIG. **4** illustrates additional aspects, denoted generally at **400**, of the production database **306**, related schema **304**, UI elements **308**, and tools **310** as provided by the client-side collaboration application **104**, as shown in FIG. **3**. While this discussion is presented in connection with the example involving a contact list, it is noted that this example is provided only to facilitate the present description, but not to limit possible implementations.

Turning to the tool **312** in more detail, in the contact list example, the tool may take the form of an application **402** through which users (e.g., **302** in FIG. **3**) may manage the contact list, represented generally at **404**. The contact list **404** may include any number of individual contacts **406a** and **406m** (collectively, contacts **406**). For example, if the contact list **404** contains contact information for a plurality of persons, different contacts **406** may represent or correspond to individual persons.

Individual contacts **406** may be implemented by corresponding record structures **408**, which may contain any number of fields **410a** and **410i** (collectively, fields **410**). For example, assuming that the contact list **404** stores names, addresses, telephone numbers, or similar information for the individual contacts **406**, a respective record structure **408** may be with the individual contacts **406**. In turn, this record structure **408** may contain individual fields **410** that store representations of the names, addresses, telephone numbers, and the like.

Turning to the UI elements **308** in more detail, these UI elements may define representations of views **412**. These views **412** may provide different types of representations, depending on the nature of the underlying data. For example, these views **412** may present lists of data elements, views of calendar data, Gantt charts or other representations of tasks within ongoing projects, or the like.

These views **412** may display to the users representations of at least a portion or a subset of the contact list **404**, along with representations of at least some of the individual contacts **406**. For example, individual contacts may be associated with one another by relationship, authorship, location, or other factors. In some cases, the view may select different records, according to which user is requesting the view, in scenarios in which the same device may support multiple users. In addition, the representations of the individual contacts may be responsive to user activation, selection, or input, causing the UI elements **308** to present one or more forms **414** dedicated to the individual selected contact. For example, a given form **414** may present information from the fields **410a-410i** that are associated with the record **408**.

In this manner, the UI elements **308** may enable users to visualize names, addresses, telephone numbers, and the like is associated with particular contacts **406**. In addition, as described in further detail below, the collaboration application **104** may enable the users to create new contacts **406**, add new fields **410** to contact records **408**, change the contents of existing fields, and the like.

Turning to the schema **304** and the production database **306** in more detail, the schema **304** may specify the data structure or hierarchy that governs the construction of the contact list **404**. For example, the schema **304** may specify the fields **410** available for inclusion within records **408** that are instantiated for the individual contacts **406**. In addition, the production database **304** may populate the list views **412** and the forms **414** presented as part of the UI elements **308**.

Referring briefly back to FIG. 3, the schema **304**, the production database **306**, and the tools **310** are synced from the server system **106a** to the client system **102a**. However, the client system **102a** or any other client system **102** may just as readily invoke a designer application locally on the client system, and construct at least portions of the schema, production database, and tools. Afterwards, any of the client systems (e.g., **102a**) may sync any updated or created schemas, production databases, and/or tools to a server system **106b**, as represented generally at **110b**. The server system **106b** may or may not be the same as the server **106a**.

In some implementations, the tools **310** may operate in at least two illustrative, separate modes. In a “connected” mode, design elements within the client systems are slaved to the server, and no design changes are made at the client. In connected mode, only data changes are made at the client. In a “not connected” mode, the clients are not connected to a server system, and design changes can be made by any authorized peer member of the workspace. These design changes are then synchronized to other peers within the workspace.

Having described the components and data flows shown in FIG. 4, the discussion now turns to a more detailed description of process flows related to instantiating and syncing tools or applications. This description is now provided with FIG. 5.

FIG. 5 illustrates process flows, denoted generally at **500**, related to instantiating in syncing tools and applications, such as those discussed in connection with FIGS. 3 and 4. For convenience of description, but not to limit possible implementations, FIG. 5 may carry forward some elements from previous drawings, and denote them with identical reference numbers. For example, FIG. 5 carries forward an example peer system at **102a**, which for the purposes of this description may perform the process flows **500**.

Turning to the process flows **500** in more detail, block **502** represents instantiating a tool or application on the peer system **102a**. FIG. 5 carries forward an example of such a tool or application at **310**.

Block **504** represents connecting the peer system **102a** to a server system (e.g., **102a** in FIG. 3). More specifically, block **504** may include connecting to the server system to download or sync parameters relating to a design of the tool or application **312**. For example, block **504** may include downloading a schema suitable for constructing a production database (e.g., **306**), as well as populating UI elements (e.g., **308**).

Block **506** represents loading or syncing a design for the tool or application, having connected to the server in block **504**. In turn, block **508** represents instantiating a tool or application design locally at the peer system **102a**. More specifically, block **508** may include instantiating the production database **306**, UI elements **308**, and tool or application **312** as shown in FIG. 5.

Block **510** represents distributing the tool or application design, as instantiated in block **508**, to one or more other peer systems. For example, assuming that the peer systems **102a** and **102n** as shown in FIG. 5 are collaborating through shared workspaces **116** (shown in previous drawings), block **510** may include syncing the instantiated tool or application design to these other peer systems **102n**.

Block **512** represents syncing changes between any number of peer systems, with these changes made using the tool or application instantiated and distributed in blocks **508** and **510**. For example, FIG. 5 carries forward an example of a sync between two or more peers at **114n**.

In some scenarios, block **512** may include syncing the instantiated tool or application to one or more server systems (e.g., carried forward at **106**). FIG. 5 denotes an example syncing to and/or from a server at **110**.

FIG. 5 illustrates example process flows **500** in which a tool or application is instantiated locally at a given peer system, based on a design synced from an external server. However, as described above, implementations are possible in which the tool or application is built locally at the peer system using a design provider or designer. These latter implementations may, for example, omit blocks **502-506**.

Having described the process flows **500** and FIG. 5, the discussion now turns to a description of process flows by which peer systems may revise and synchronize revisions occurring locally on the peer systems. This description is now provided with FIG. 6.

FIG. 6 illustrates process flows, denoted generally at **600**, by which peer systems may revise and synchronize revisions occurring locally on the various peer systems. For convenience of description, but not to limit possible implementations, FIG. 6 may carry forward some elements from previous drawings, and denote them with identical reference numbers. For example, FIG. 6 carries forward example peer systems at

102a and **102n**, which are assumed to be collaborating through respective instances of a shared workspace **116**.

Only for the purposes of this description, but not to limit possible implementations, the process flows **600** are illustrated and described in connection with the peer systems **102a** and **102n**. However, implementations of this description may perform at least portions of the process flows **600** using other components without departing from the scope and spirit of this description. In addition, these process flows are described as proceeding in certain orders only for purposes of this description, and implementations of these process flows may proceed in different orders as well.

Turning to the process flows **600** in more detail, block **602a** represents receiving indications of one or more revisions occurring locally at the peer system **102a**. At the peer system **102n**, block **602n** represents receiving indications of revisions occurring locally at that peer system. the revisions received in blocks **602a** and **602n** may, for example, be made through the UI elements **308** shown in FIGS. **3** and **4**, as facilitated by the tools or applications **310**.

Referring back to the above example involving the contact list **404** shown in FIG. **4**, the revisions received in blocks **602a** and **602n** may include revisions made to the record structures **408** and/or to the fields **410**. For example, one peer system **102a** may modify the schema **304** to add a new field **410** to the record structures **408**, with this new field including e-mail addresses for the various contacts **406**. Another peer system **102n** may revise an existing form **414** to provide a new phone number for a contact **406**.

The revisions represented in blocks **602a** and **602n** may or may not occur simultaneously. Further, these revisions may occur while one or more of the peer systems **102a** or **102n** are in off-line or online states.

Block **604a** represents the peer system **102a** creating a local version on the peer in response to the revisions received in block **602a**. For example, assuming that the peer system **102a** modified the schema **304** to add the new field for e-mail addresses, block **604a** may include creating a new version of the schema **304** to incorporate this new e-mail address field.

At the peer system **102n**, block **604n** represents creating a version on this peer system in response to the revisions received in block **602n**. For example, assuming that the peer system **102n** provided a new phone number for one of the contacts in a contact list, block **604n** may include creating a new version of the contact list incorporating the new phone number.

Block **606a** represents the peer system **102a** syncing at least the new version created in block **604a** with one or more other peer systems sharing the workspace **116**. For example, block **606a** may represent the peer system **102a** syncing the new e-mail address field to one or more other peer systems (e.g., **102n**).

Block **606n** represents the peer system **102n** syncing at least the new version created in block **604n** with one or more other peer systems sharing the workspace **116**. For example, block **606n** may represent the peer system **102n** syncing the new phone number for the contact to one or more other peer systems (e.g., **102a**).

FIG. **6** carries forward at **114n** a representation of peer syncs between the peer systems **102a** and **102n**. As part of these peer syncs, the process flows **600** may exchange a version table **608** between the client systems participating in the sync. Continuing the ongoing example, one instance of the version table **608** may reflect the new e-mail address field passing from the peer system **102a** to the peer system **102n**. Similarly, another instance of the version table **608** may

reflect the new phone number passing from the peer system **102n** to the peer system **102a**.

Block **610a** represents the peer system **102a** evaluating the revisions synced-in from the peer system **102n** in block **606a**, to determine whether these revisions conflict with any revisions performed locally on the peer system **102a**. For example, if the peer system **102n** syncs a new telephone number for a contact across to the peer system **102a**, block **610a** may include determining whether this new telephone number conflicts with any information maintained locally at the receiving peer system **102a**.

Similarly, at the peer system **102n**, block **610n** represents evaluating the revisions synced-in from the peer system **102a** in block **606n**, to determine whether these revisions conflict with any revisions performed locally on the peer system **102n**. For example, if the peer system **102a** syncs a new e-mail address field across to the peer system **102n**, block **610n** may include determining whether this new e-mail address field conflicts with any information maintained locally at the peer system **102n**.

From decision block **610a**, if no conflict results from the revisions synced-in from another peer system, the process flows **600** may take No branch **612a** to return to block **602a**. In block **602a**, the peer system **102a** may await further revisions arriving locally from, for example, a local user accessing this peer system. Similarly, from decision block **610n**, no conflict results from the revisions synced-in from another peer system, the process flows **600** may take No branch **612n**, returning to block **602n** to await further revisions locally at the peer system **102n**.

The preceding discussion described scenarios in which no conflict results from peer to peer syncs. However, in some cases, conflicts can result when peers sync with one another. Returning, for example, to decision block **610a**, assume that the new telephone numbers synced-in from the peer system **102n** conflicts with telephone information revised locally at the peer system **102a** in this case, the process flows **600** may take Yes branch **614a** to block **616a**.

Block **616a** represents selecting a winning version, as between the conflicting versions maintained locally at the peer system **102a** and the version as synced-in from the peer system **102n**. Any number of different algorithms or techniques may be employed to select this winning version, and are not detailed further in this description. Block **616a** may also include designating or marking a winning version as such.

Having designated a winning version in block **616a**, block **618a** represents marketing other conflicting versions as such. However, block **618a** may include retaining or maintaining these conflicting versions, rather than deleting them. For example, block **618a** may include presenting a conflict resolution UI to one or more users accessing the peer system **102a**, with this conflict resolution UI including representations of the various conflicting versions, as well as designating which version was selected as the winner the conflict. In this manner, block **618a** may enable the users to review the conflicting versions, and correct or resolve any conflicts as appropriate.

In similar fashion, at the peer system **102n**, if block **610n** determines that a conflict exists with a version as synced-in from the peer system **102a**, the process flows **600** may take Yes branch **614n** to block **616n**. Block **616n** may operate similarly to block **616a**, in selecting a winning version, with the understanding that block **616n** executes on the peer system **102n**.

Block **618n** represents marking and maintaining the conflicting versions, similarly to block **618a**. In general, the description of block **618a** may apply equally to block **618n**.

Having described the process flows **600** for receiving and syncing revisions across different peer systems, as well as resolving conflicts between those revisions, the discussion now proceeds to a description of process flows for performing client/server syncs. This description is now provided with FIG. 7.

FIG. 7 illustrates process flows, denoted generally at **700**, for performing syncs between clients and servers. For convenience of description, but not to limit possible implementations, FIG. 7 may carry forward some elements from previous drawings, and denote them with identical reference numbers. For example, FIG. 7 carries forward an example client system **102**, as well as a server system at **106**. In addition, the process flows **700** shown in FIG. 7 may be understood as providing examples of the sync flows **110** between the client system **102** and a server system **106**.

Turning to the process flows **700** in more detail, block **602** represents receiving any number of revisions locally at the client system **102**. The processing represented in block **602** in FIG. 7 may be similar to that represented in blocks **602a** and **602n** in FIG. 7. Thus, the description of those blocks in FIG. 6 applies equally to block **602** in FIG. 7.

Block **604** represents creating versions on the client system **102** in response to the revisions received in block **602**. In general, the processing represented in block **604** in FIG. 7 may be similar to that represented in block **604a** and **604n** in FIG. 6. Thus, the description of these blocks in FIG. 6 applies equally to block **604** in FIG. 7.

Block **702** represents syncing the version created in block **604** to one or more external server systems **106**. FIG. 7 represents this client/server sync at **110**, as carried forward from FIG. 1.

At the server system **106**, block **704** represents receiving the sync from the client system **102**. In turn, decision block **706** represents validating the sync received from the client system, to determine whether it is valid in the context of the server system **106**.

From decision block **706**, if the sync received from the client system is valid on the server system **106**, the process flows **700** may take Yes branch **708** to block **710**, which represents reporting this finding to the client system **102**. More specifically, block **710** may include sending a synchronization report **712** to the client system, indicating the results of the server sync **110**. If decision block **706** indicates that the data and/or items received sync are valid on the server system, the synchronization report **712** may so indicate.

Returning to decision block **706**, if the sync received from the client system is invalid on the server system **106**, the process flows **700** may take No branch **714** to block **716**. Block **716** represents rejecting the revisions incorporated in the sync from the client system. For example, returning to the example in which one of the client systems **102** adds a new e-mail field to a database schema within the workspace **116**, the server system **106** may determine that the client systems **112** lack sufficient permissions or privileges to alter the database schema, as stored on the server system **106**. In another example pertaining to data changes, an application running on the server may determine that a value entered into an email address field for a particular contact is not valid, due to special rules or additional validation processing performed by this server-side application. However, a client-side version of this same application may not perform this same validation processing. In these or other example scenarios, block **716** may reject the attempted change to the server-side database schema.

Block **718** represents marking the rejected revisions as invalid. However, despite having found these revisions

invalid, the server system **106** may maintain and retain the rejected revisions, rather than deleting these revisions. In this manner, the server system may avoid loss of the data changes made by users of the client systems. The process flows **700** may then proceed to block **710**, to report the rejected revisions to the client system as part of the sync report **712**.

At the client system **102**, decision block **720** represents determining whether the server system reported an error in response to the server sync **110** initiated by the client system. For example, the sync report **712** may indicate errors arising on the server system. If the server system **106** did not report an error, the process flows **700** may take No branch **722** to return to block **602**, and await further revisions at the client system **102**.

Returning to decision block **720**, if the server system **106** reported an error with the server sync **110**, the process flows **700** may take Yes branch **724** to block **726**, which represents marking the versions synced in block **702** as rejected by the server system. However, block **726** may include retaining or maintaining the rejected versions, rather than deleting them.

Block **728** represents reporting any error conditions to the client system **102**, as well as any peer systems that are operating within a shared workspace with the client system **102**. In this manner, the process flows **700** may enable appropriate ones of these peer systems to address or remediate any issues with the revisions that caused the server system rejecting the server sync **110**.

Having described the process flows **600** and **700** in FIGS. 6 and 7, several observations are noted. First, FIG. 6 illustrates conflicts arising between peer systems **102**, as well as managing and resolving those conflicts within the peer systems. Second, the scenario shown in FIG. 7, in which the server system **106** rejects syncs from the client systems may be referred to as “refuse errors”. These refuse errors may be viewed as a type of conflict that arises between the server system **106** and any client systems **102**. Generally, when conflicts arise between the server systems and client systems, the server systems may “win” these conflicts. However, the process flows **600** and **700** manage these different types of conflicts using similar mechanisms: by not only selecting a “winner” of the conflict in some manner, but also by preserving or maintaining the “losers” of the conflict. In this manner, the process flows at **600** and **700** enable further processing and resolution directed to the conflicting items that are not chosen as winners. These process flows **600** and **700** may also facilitate conversions between HTML and rich text, and the like.

Although the server systems and client systems may employ similar mechanisms to resolve conflicts, it is noted that the server systems may not be aware of all conflicts occurring among client systems that are operating as peers. For example, a given revision made by one peer may be rejected by the other peers for any number of reasons, and the client systems may not sync such rejected revisions to the server systems. This scenario provides an example illustrating a more general principle, under which the client systems and the server systems may maintain distinct models of the data structures they are synchronizing.

Having described the process flows **700** for managing conflict between systems and server systems, the discussion now turns to a description of data storage architectures and related process flows for syncing data from server systems to client systems. This description is now provided with FIG. 8.

FIG. 8 illustrates data storage architectures and related process flows, denoted generally at **800**, for syncing data from server systems to client systems. For convenience of description, but not to limit possible implementations, FIG. 8 may

carry forward some elements from previous drawings, and denote them with identical reference numbers. For example, FIG. 8 carries forward examples of client systems at **102a** and **102n** (collectively, client systems **102**), as well as an example server system at **106**.

Turning to FIG. 8 in more detail, the server system **106** may manage one or more server-side databases **802**, which may be responsive to run-time queries from various client systems **102** to provide list views to those client systems. In some cases, the server-side databases **802** and its related administration software may not be particularly optimized for run-time performance. For example, as incoming queries arrive from the client systems (e.g., **102a**), the server-side database **802** may gather data stored in a variety of different locations within the database to satisfy these queries. FIG. 8 provides two examples of such data as data subsets **804a** and **804p** (collectively, data subsets **804**). Gathering this data from a variety of different locations consumes overhead on the server system **106**, and typically this overhead is repeated for various queries arrive from client systems **102**.

Turning to the client systems **102**, a client-side collaboration application **104** may receive syncs from the server system **106**, with FIG. 8 carrying forward an example client server sync at **110**. The incoming server sync **110** shown in FIG. 8 may, in some cases, result from queries directed from the client systems **102** to the server systems **106**. More specifically, the data contained within the incoming sync **110** may contain at least the data subsets **804** were gathered from various locations within the server-side database **802**.

As data arrives on the wire from server systems **106** at various client systems **102** (e.g., **102a**), the client systems may initiate instances of the process flows **800**. In some cases, these process flows may improve processing of this incoming data within a plurality of client systems **102a** and **102n** that are collaborating through a shared workspace, carried forward at **116**.

Turning to these process flows and more detail, block **806** represents receiving the incoming sync **110**, from the server system **106**, at a given client system **102a**. In turn, block **808** represents deconstructing or decomposing data contained within the incoming sync **110**. For example, assuming that the incoming sync contains various data subsets **804**, block **808** on the client system may include identifying and separating these various data subsets **804a** and **804p**. In a relatively simplified example, one data subset **804a** may represent a string value transmitted to the client systems, while the data subsets **804p** may represent a numeric value (e.g., integer, float, etc.) transmitted to the client systems. In such a case, block **808** may separate and identifies the string value from the numeric value, as concatenated and transmitted together within the incoming sync **110**.

In another example, particular data types may represent a “user”. The on-the-wire communication received at the client system may represent the “user” data type as, for example, the string “123;#johnsmith@company.com”. Within this example string, the numeric prefix may provide an index into a table of users, and the text portion may provide an email address. For convenience on the client side, the client systems may decompose this data type into the following separate fields: the numeric index value as received from the server, the email address, the textual name to be displayed for this user (which may be obtained by a local dereferencing to a client-side copy of the user table), and the like.

Block **810** represents defining one or more strongly-typed, multi-representative data types, which facilitate deconstructing the incoming data from the server systems **106** for more efficient storage and processing within the client systems **102**.

Returning to the string-numeric example introduced with block **808**, the multi-representative data type may facilitate storing and indexing the string and numeric portions separately. In this scenario, the string and numeric portions may be searched separately, with searches for the strings being optimized separately from any optimizations applied to searching the numeric portions.

In addition to facilitating search, the multi-representative data types may enable indexing within list views. For example, returning to the “user” data type example above, the various fields into which incoming data types are decomposed may be sorted and displayed in order in a list view.

It is also noted that the data transformations described in these examples may be bidirectional. For example, when decomposing the data types incoming from the server into fragments, these fragments may be synchronized across any number of client systems that have peer relationships with one another. If the clients/peers make changes to these fragments, these changes may be synced not only to other peers, but also to one or more server systems. However, before syncing the changes to the servers, the clients/peers may reassemble these changed fragments back into the data types compatible with the server.

Block **812** represents storing the multi-representative data type defined in block **810**. More specifically, block **812** may include associating the multi-representative data type with a given shared workspace **116** through which client system **102a** and **102n** collaborate. In some cases, client-side storage elements (carried forward at **118**) may store the multi-representative data types on behalf of the client systems **102** accessing the shared workspace **116**.

In this manner, once one of the client systems **102** has queried for particular data subsets **804** from the server system **106**, those data subsets may be stored and indexed on the client side within storage elements **118**. Thus, any subsequent queries for those same data subsets **804** may be satisfied from the client-side storage **118**, rather than directing queries all the way to the server system **106**. The client-side storage **118** may be optimized for a particular processing performed through the shared workspace **116**. Subsequent queries may be satisfied more efficiently from this optimized client-side storage, as compared to running the same queries on the server system **106**. More specifically, result from these queries may be compiled and displayed faster at run-time within the workspace **116**, as compared to the server system **106**.

Having described the architectures and process flows **800** in FIG. 8, several observations are noted. In some cases, the data types handled within the shared, peer-to-peer workspace (e.g., **116**) may be different than the data types handled within the central server **106**. Some of these data types may not easily transition between the peer-to-peer workspace and the centralized server. However, the multi-representative data types described in FIG. 8 may facilitate these transitions, by facilitating conversions of string variables received from the server system **106** into different representations as appropriate for the peer-to-peer workspace **116**, and vice versa. The multi-representative data types may also facilitate mapping, aliasing, and referencing capabilities within the shared workspace, as well as indexing, collating, and search-related functions.

In addition, the architectures and process flows **800** may enable the client systems to avoid collisions between names used on the server and names used within the workspace. For example, where database implementations within the client systems have internally reserved field names for its own purposes (e.g. “CreatedBy”), the server systems may have a different field with the same name, resulting in a name con-

15

flict or collision. In such scenarios, the multi-representative data types may translate between the client and server systems, so as to decouple local naming on the client from external naming on the server, yet translate from the naming on the client to the naming on the server (and vice versa), as appropriate.

Having described the architectures and process flows **800** in FIG. **8**, the discussion now proceeds to a description of process flows related to updating application designs in response to design changes synced in from server systems. This description is now provided with FIG. **9**.

FIG. **9** illustrates process flows, denoted generally at **900**, related to updating application designs on the client systems, in response to design changes synced in from server systems. For convenience of description, but not to limit possible implementations, FIG. **9** may carry forward some elements from previous drawings, and denote them with identical reference numbers. For example, FIG. **9** carries forward examples of client systems at **102**, as well as an example server system at **106**. Although the process flows **900** are described in connection with these client and server systems, it is noted that implementations of these process flows may be performed on other components, without departing from the scope and spirit of this description.

Turning to the process flows **900** in more detail, block **902** represents the client system **102** receiving a sync from the server system **106**. More specifically, block **902** may include receiving a sync **904** from the server that updates a schema used to populate a production database maintained by the client system **102**. FIG. **9** carries forward an example production database at **306**, an example schema **304**, and an example tool or application **312**, which is instantiated from the production database.

Block **906** represents comparing the schema as received in the sync **904** to the production schema **304** currently used to instantiate the production database **306**. In turn, block **908** may include identifying any differences between the current production schema **304** and the schema represented by the incoming sync **904**.

Block **910** represents creating a clone of the current production database to be used for validating the incoming schema changes, as well as loading the clone database with the current schema. FIG. **9** provides an example of the clone database at **912**, and represents loading the current schema into this database at **914**.

Block **916** represents incorporating the updated schema into the clone database **912**, thereby updating the clone database with the updated schema as received from the server system. FIG. **9** represents the updated schema or schema changes at **918**, as copied to the clone database **912**. In this manner, block **916** may take the current schema **914** as a starting point, and then update the schema with the schema changes **918** arriving from the server system **106**.

Block **920** represents validating the updated schema in the clone database. In general, block **920** may include instantiating or building a tool or application within the clone database, and evaluating the results. In turn, decision block **922** represents determining whether the updated schema was validated within the clone database. If the updated schema was valid within the clone database, the process flows **900** may take Yes branch **924** to block **926**, which represents merging the schema changes into the production database **306** on the client system **102**. FIG. **9** represents these merged schema updates at **928**.

Block **930** represents propagating the schema changes and/or the updated production database to other client systems collaborating within a given shared workspace (e.g., **116** in

16

previous drawings). In this manner, all client systems **102** collaborating within the shared workspace may operate from a common production database **306**.

Returning to decision block **922**, if the updated schema was not valid within the clone database, the process flows **900** may take No branch **932** to return to block **902**. The process flows may remain in block **902**, awaiting receipt of the next schema sync from the server system **106**. In effect, taking No branch **932** enables the process flows **900** to not assimilate any invalid schema syncs into the production database **306**.

Having described the process flows **900** in FIG. **9**, several observations are now noted. The process flows **900** may provide the client systems **102** with a dynamic reconfiguration capability, by which the client systems **102** may update production databases (as well as related UI elements, tools or applications, and other elements) in response to schema changes synced-in from the server systems. In addition, this dynamic reconfiguration capability may validate schema changes within a temporary or clone database, before committing schema changes to the live production database.

Although the subject matter presented herein has been described in language specific to computer structural features, methodological acts, and computer readable media, it is to be understood that the invention defined in the appended claims is not necessarily limited to the specific features, acts, or media described herein. Rather, the specific features, acts and mediums are disclosed as example forms of implementing the claims.

In addition, certain process and data flows are represented herein as unidirectional only for the purposes of facilitating this description. However, these unidirectional representations do not exclude or disclaim implementations that incorporate bidirectional flows.

The subject matter described above is provided by way of illustration only and should not be construed as limiting. Various modifications and changes may be made to the subject matter described herein without following the example embodiments and applications illustrated and described, and without departing from the true spirit and scope of the present invention, which is set forth in the following claims.

What is claimed is:

1. A computer-readable storage medium having computer-executable instructions stored thereon which, when executed by a client system operable with a server system, cause the client system to perform a method comprising:

providing a production database on the client system, wherein the production database is for instantiating an application related to a workspace shared between the client system and an other client system, wherein the production database is associated with a current schema; receiving a synchronization flow from the server system, wherein the synchronization flow includes at least information representing a second schema;

comparing the current schema to the second schema, as received from the server system;

creating a clone of the production database thereby forming a clone database;

loading the current schema into the clone database;

incorporating the second schema into the clone database; and

evaluating whether the clone database is valid, as updated with the second schema.

2. The storage medium of claim 1, further comprising instructions for merging the second schema into the production database forming a merged production database, in response to determining that the clone database is valid.

17

3. The storage medium of claim 2, further comprising instructions for propagating the merged production database to the other client system.

4. The storage medium of claim 1, wherein the current schema is a production schema that is currently used to instantiate the production database. 5

5. The storage medium of claim 1, further comprising instructions for identifying at least one difference between the current schema and the second schema.

6. The storage medium of claim 1, further comprising instructions for not assimilating the synchronization flow into the production database, in response to determining that the clone database is not valid. 10

7. The storage medium of claim 6, further comprising instructions for awaiting receipt of another synchronization flow, in response to determining that the clone database is not valid. 15

8. A computer-implemented method comprising performing computer-implemented operations for:

providing a production database on a client system, wherein the production database is for instantiating an application related to a workspace shared between the client system and an other client system, wherein the production database is associated with a current schema; 20

receiving a synchronization flow from a server system, wherein the synchronization flow includes at least information representing a second schema; 25

comparing the current schema to the second schema, as received from the server system;

creating a clone of the production database thereby forming a clone database; 30

loading the current schema into the clone database;

incorporating the second schema into the clone database; and

evaluating whether the clone database is valid, as updated with the second schema. 35

9. The computer-implemented method of claim 8, further comprising merging the second schema into the production database forming a merged production database, in response to determining that the clone database is valid.

10. The computer-implemented method of claim 9, further comprising propagating the merged production database to the other client system. 40

11. The computer-implemented method of claim 8, wherein the current schema is a production schema that is currently used to instantiate the production database. 45

12. The computer-implemented method of claim 8, further comprising identifying at least one difference between the current schema and the second schema.

13. The computer-implemented method of claim 8, further comprising not assimilating the synchronization flow into the production database, in response to determining that the clone database is not valid. 50

14. The computer-implemented method of claim 13, further comprising awaiting receipt of another synchronization flow, in response to determining that the clone database is not valid. 55

18

15. A client system comprising:

a processor; and

a computer-readable storage medium operably connected to the processor, the computer-readable storage medium having computer-executable instructions stored thereon which, when executed by the processor, cause the processor to:

provide a production database, wherein the production database is for instantiating an application related to a workspace shared between the client system and an other client system, wherein the production database is associated with a current schema;

receive a synchronization flow from a server system, wherein the synchronization flow includes at least information representing a second schema;

compare the current schema to the second schema, as received from the server system;

create a clone of the production database thereby forming a clone database;

load the current schema into the clone database;

incorporate the second schema into the clone database; and

evaluate whether the clone database is valid, as updated with the second schema.

16. The client system of claim 15, wherein the computer-readable storage medium has further computer-executable instructions stored thereon which, when executed by the processor, cause the processor to merge the second schema into the production database forming a merged production database, in response to determining that the clone database is valid. 30

17. The client system of claim 16, wherein the computer-readable storage medium has further computer-executable instructions stored thereon which, when executed by the processor, cause the processor to propagate the merged production database to the other client system. 35

18. The client system of claim 15, wherein the computer-readable storage medium has further computer-executable instructions stored thereon which, when executed by the processor, cause the processor to identify at least one difference between the current schema and the second schema.

19. The client system of claim 15, wherein the computer-readable storage medium has further computer-executable instructions stored thereon which, when executed by the processor, cause the processor to not assimilate the synchronization flow into the production database, in response to determining that the clone database is not valid.

20. The client system of claim 19, wherein the computer-readable storage medium has further computer-executable instructions stored thereon which, when executed by the processor, cause the processor to await receipt of another synchronization flow, in response to determining that the clone database is not valid.

* * * * *